

**DIBY
CLUB**

ANYTHING BUT BASIC TEE - PLUS

WK-75276

©DIBY Club 2018

3/8" Seam Allowance Included

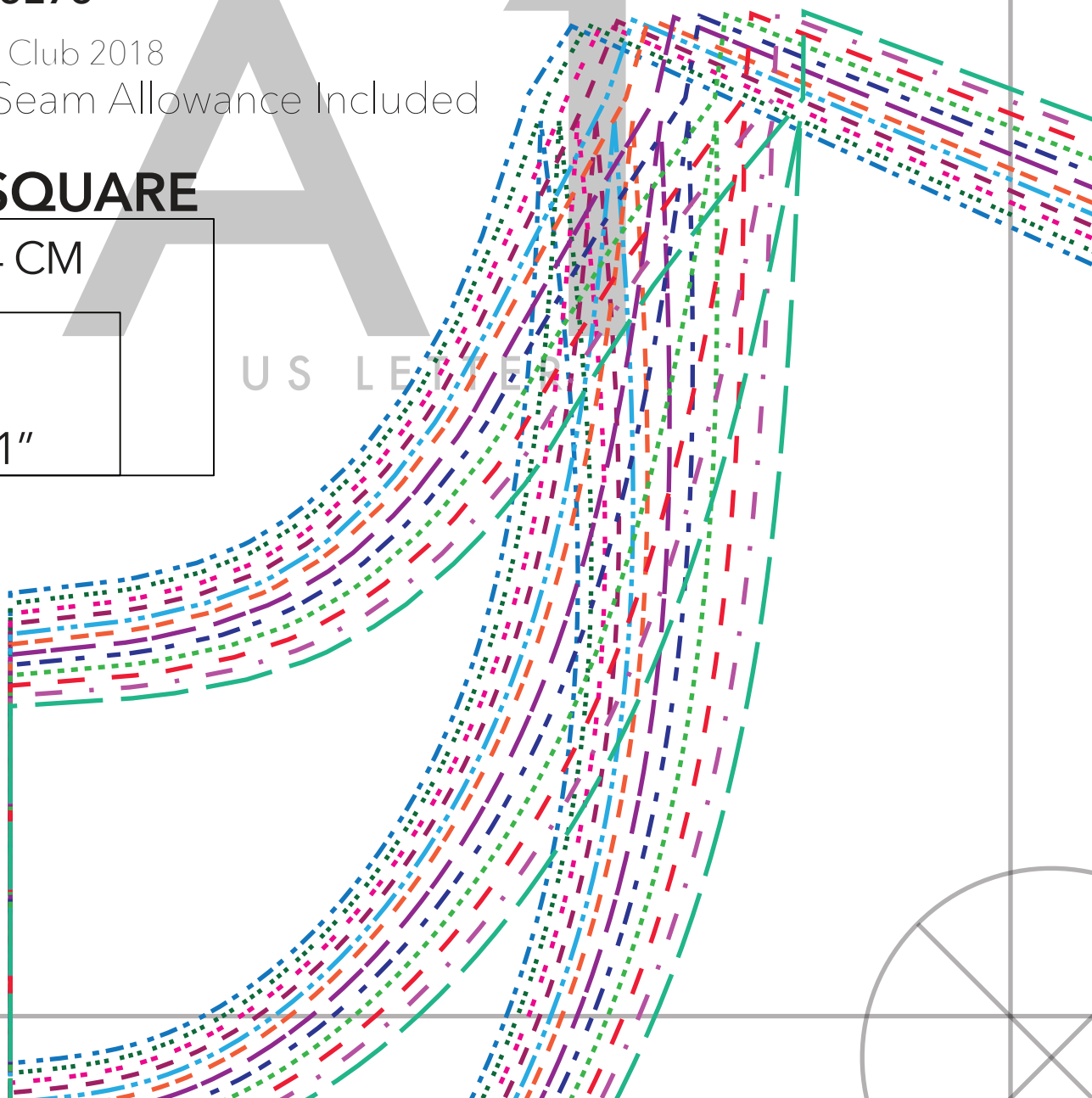
TESTER

SQUARE

4 CM

1"

U S L E I E R





Anything But Basic
Tee (WK-75276) - PLUS

LOW CREW N

©DIBY Club 2018

3/8" Seam Allowance Inclu

CUT 1 ON FOLD

A2

US LETTER



V NECK

Included

GRAINLINE

FOLD LINE

A3

U S L E T T E R

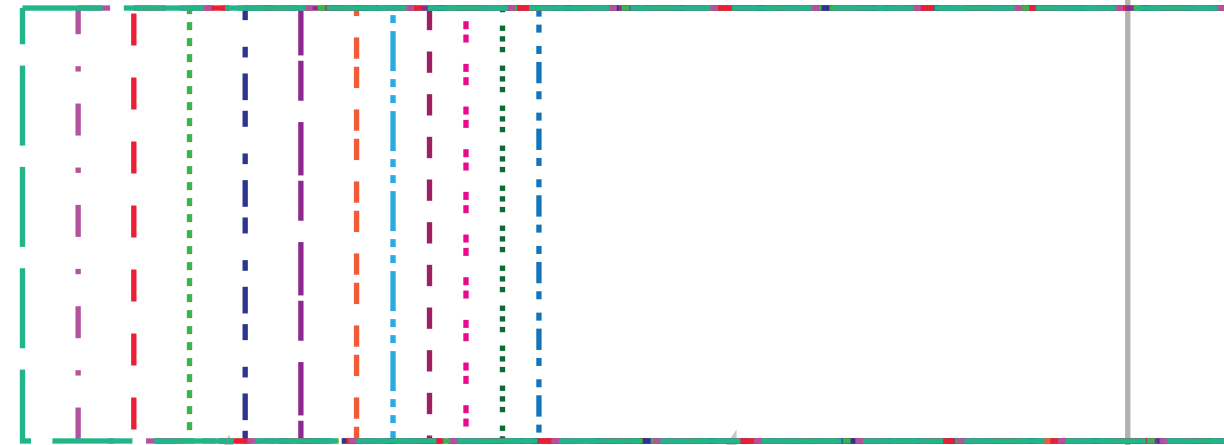
Anything But Basic
Tee (WK-75276) - PLUS

HIGH CREW NECK

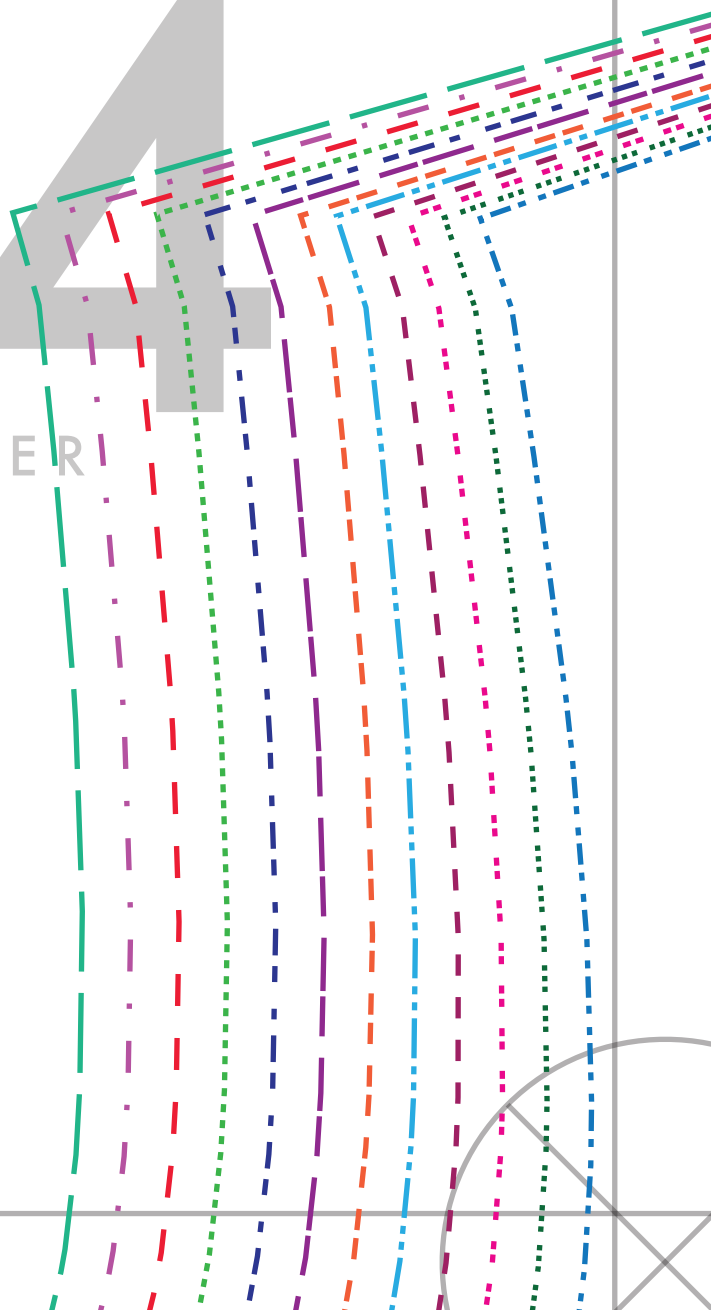
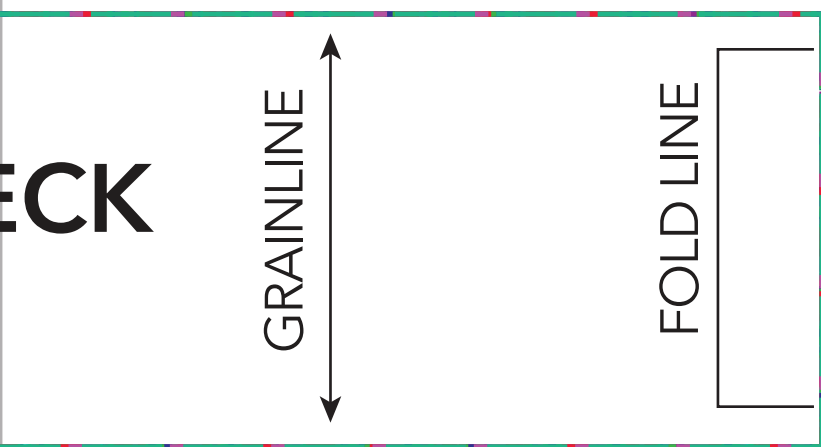
©DIBY Club 2018

3/8" Seam Allowance Included

CUT 1 ON FOLD



US LETTER



Anything But Basic
Tee (WK-75276) - PLUS

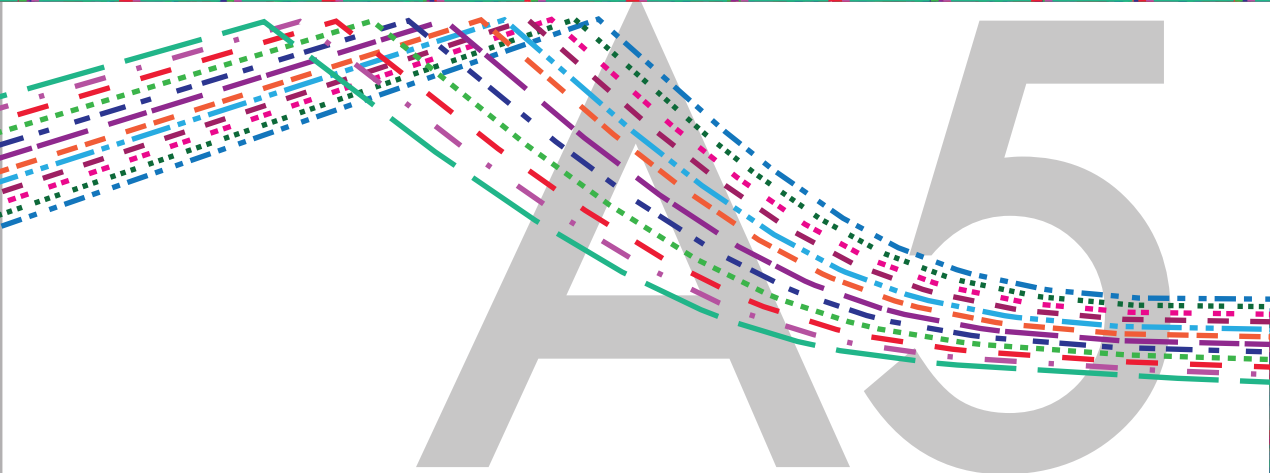
SCOOP NECK

©DIBY Club 2018

3/8" Seam Allowance Included

CUT 1 ON FOLD

GRAINLINE



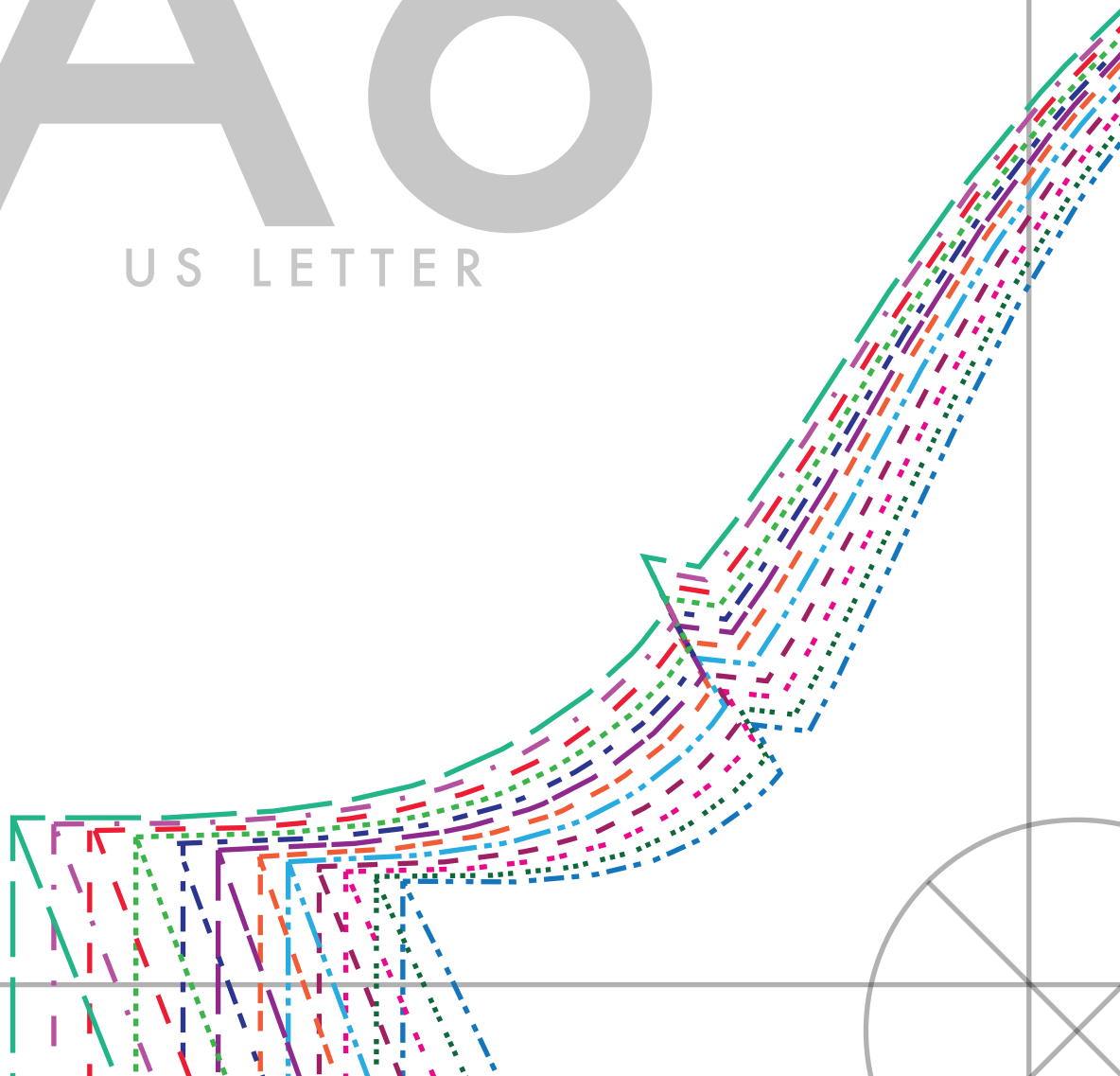
US LETTER

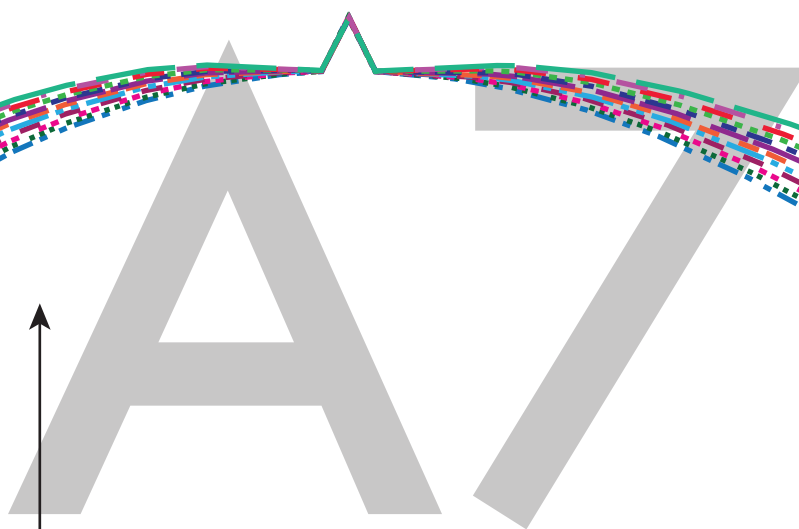


FOLD LINE

A6

US LETTER





US LETTER

Anything But Basic
Tee (WK-75276) - PLUS

SLEEVE

©DIBY Club 2018

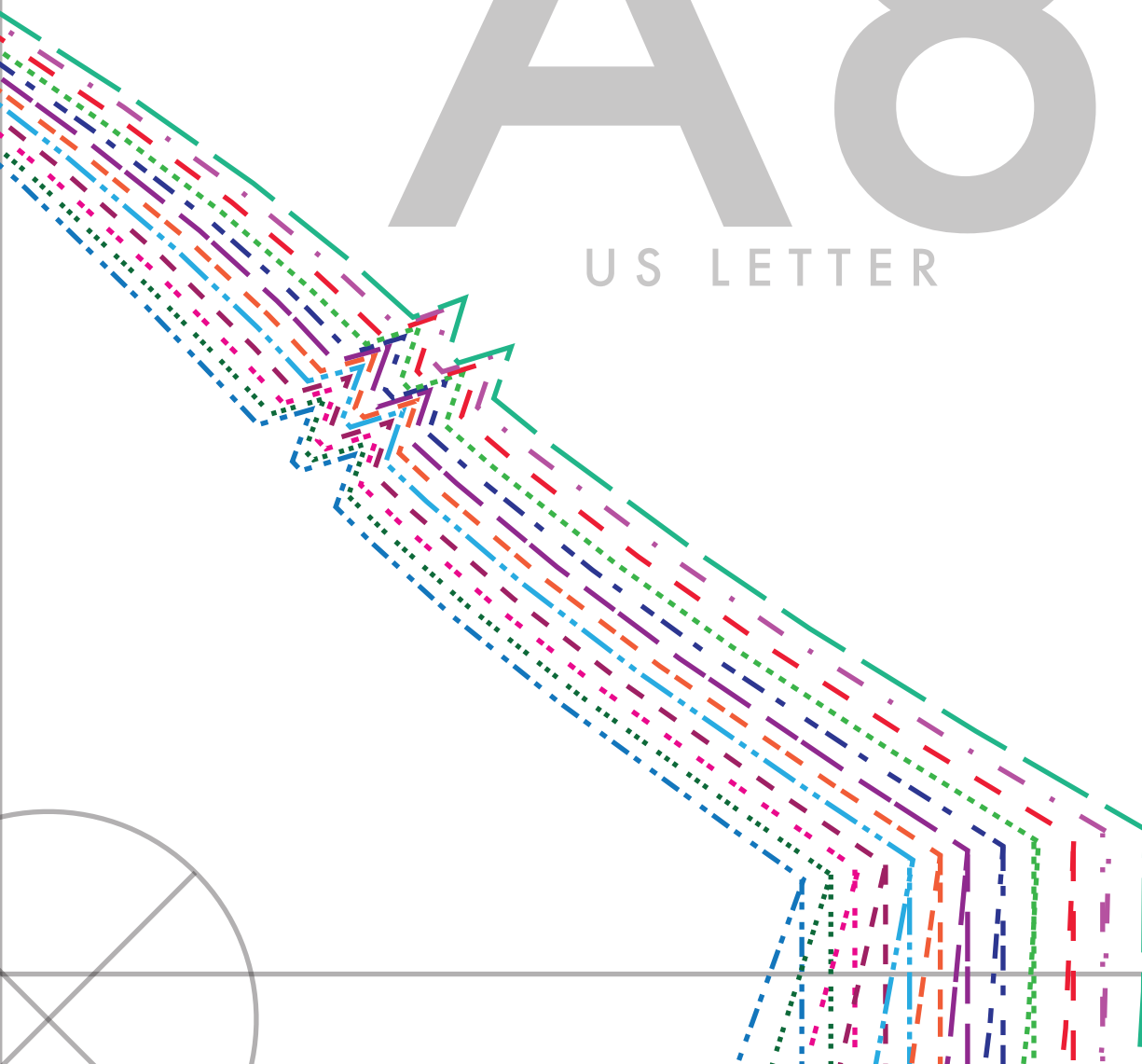
3/8" Seam Allowance Included

CUT 2 MIRROR

RAINLINE

A8

US LETTER



HIGH BU

Anything But Basic
Tee (WK-75276) - PLUS

FRONT BODICE

©DIBY Club 2018

3/8" Seam Allowance Included

CUT 1 ON FOLD

FOLD LINE

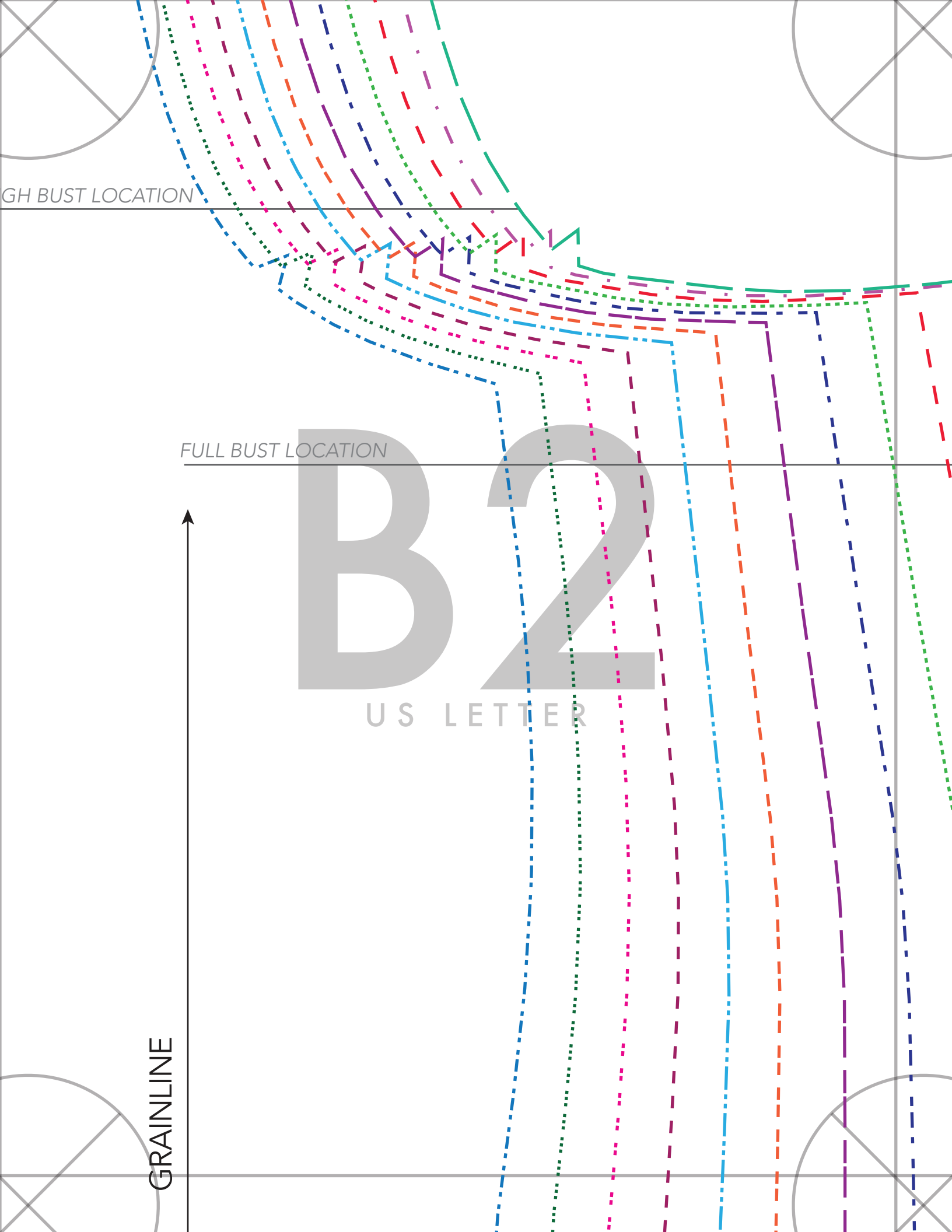
GH BUST LOCATION

FULL BUST LOCATION

GRAINLINE

B2

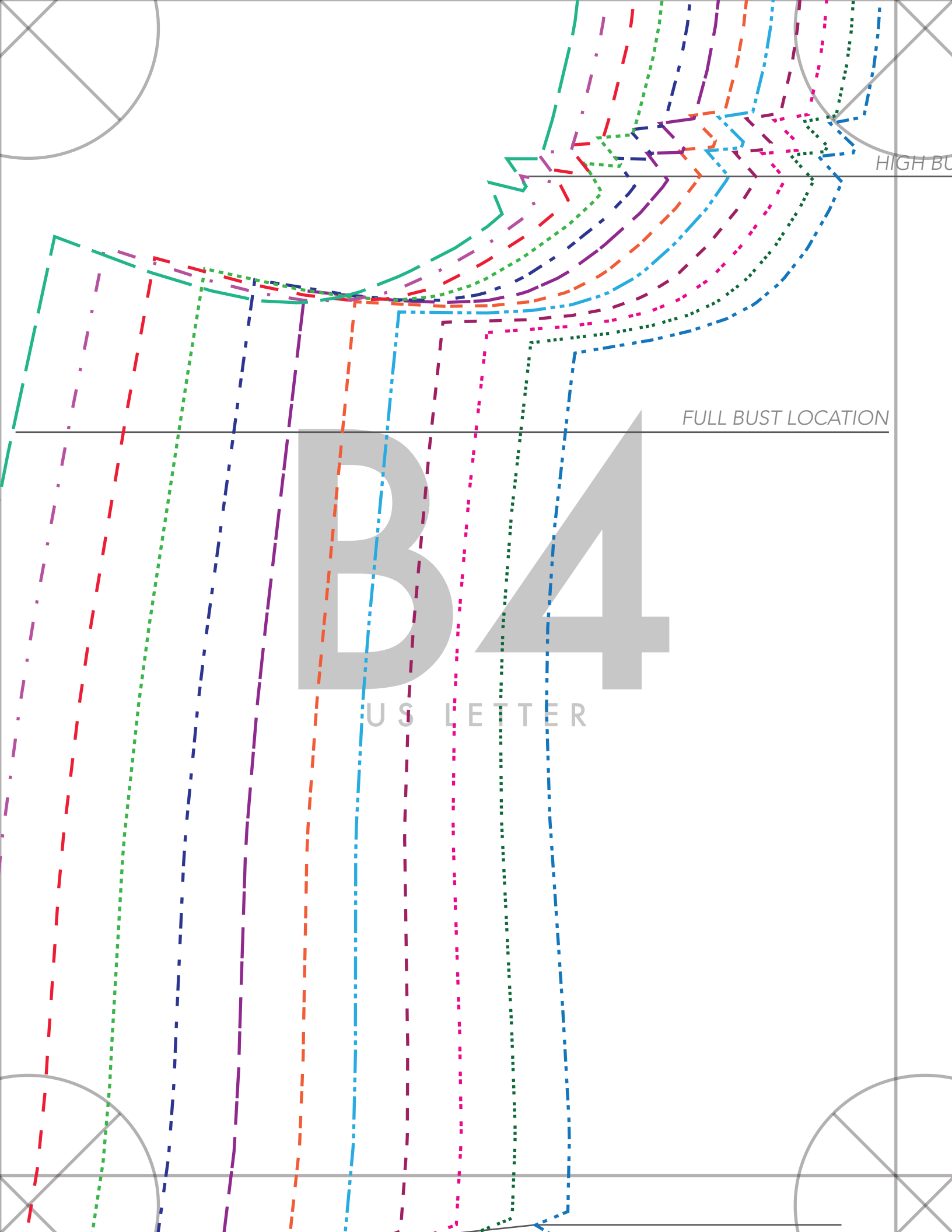
US LETTER





B3

U S LETTER



B4

US LETTER

GH BUST LOCATION

Anything But Basic
Tee (WK-75276) - PLUS

BACK BODICE

©DIBY Club 2018

3/8" Seam Allowance Included

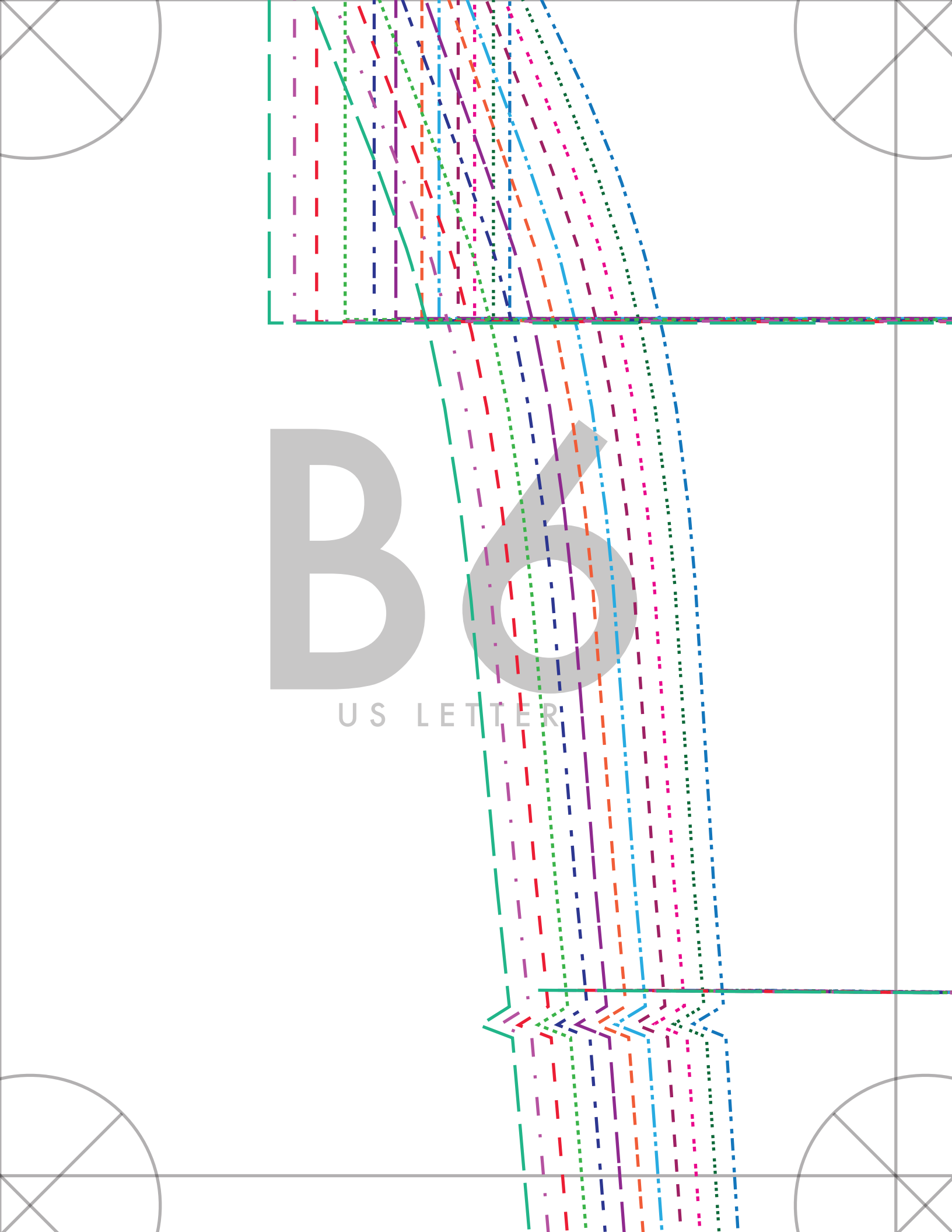
CUT 1 ON FOLD

GRAINLINE

Size 14	
Size 16	
Size 18	
Size 20	
Size 22	
Size 24	
Size 26	
Size 28	
Size 30	
Size 32	
Size 34	
Size 36	

FOLD LINE

U S LETTER



A technical drawing of a letter 'B' on a grid. The letter is drawn with a solid black outline. A series of dashed lines in various colors (red, green, blue, purple, orange, pink, and grey) are drawn across the page, some parallel to the letter's strokes and others at different angles. A grey arrow points from the top right towards the center of the letter. The background is a light grey grid with circles in the corners.

B

U S L E T T E R

GRAIN

SHORT SLEEVE - 1" HEM

B7

US LETTER

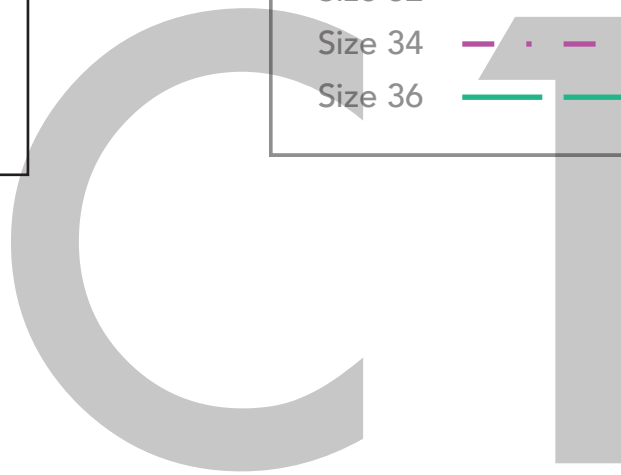
ELBOW LENGTH - 1" HEM



The image is a handwriting practice sheet for the letter 'B'. It features a large, light gray 'B' in the center. The background is white with a grid of dashed lines in various colors (blue, green, red, purple, orange, pink, yellow) that form a pattern of 'B's. The grid is composed of horizontal and vertical lines, with the vertical lines being dashed and the horizontal lines being solid. The dashed lines are colored in a repeating sequence of blue, green, red, purple, orange, pink, and yellow. The horizontal lines are solid and colored in the same sequence. The large 'B' in the center is a light gray color. The text 'B B' is written in a large, bold, sans-serif font. Below the 'B B' is the text 'US LETTER' in a smaller, bold, sans-serif font. The entire sheet is framed by a thin gray border. In the corners, there are gray circles with an 'X' inside, likely for alignment or registration marks.

B B

US LETTER



U S L E T T E R

Size 14	
Size 16	
Size 18	
Size 20	
Size 22	
Size 24	
Size 26	
Size 28	
Size 30	
Size 32	
Size 34	
Size 36	

WAIST LOCATION

HIGH HIP LOCATION

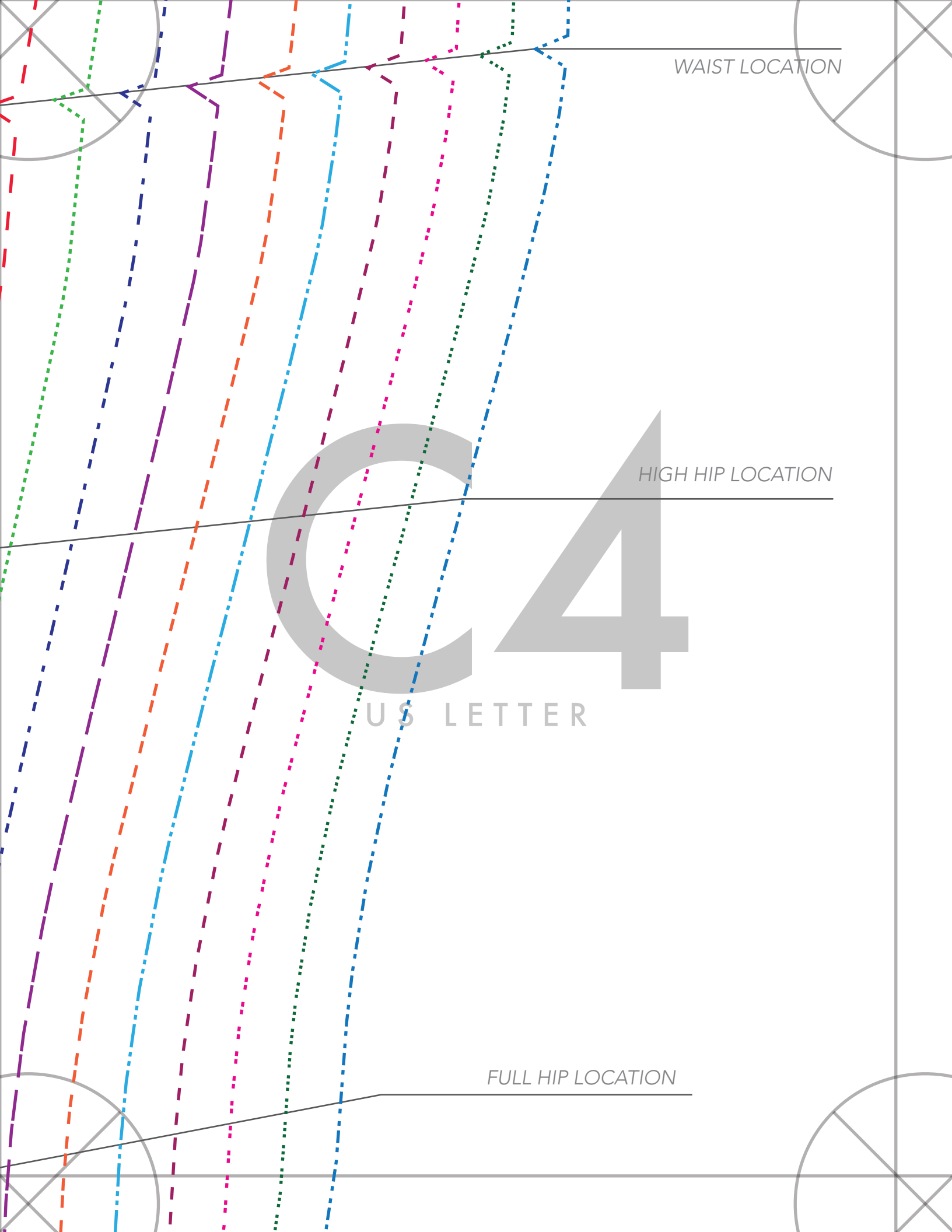
C2
US LETTER

FULL HIP LOCATION



C3

US LETTER



WAIST LOCATION

HIGH HIP LOCATION

C4

US LETTER

FULL HIP LOCATION

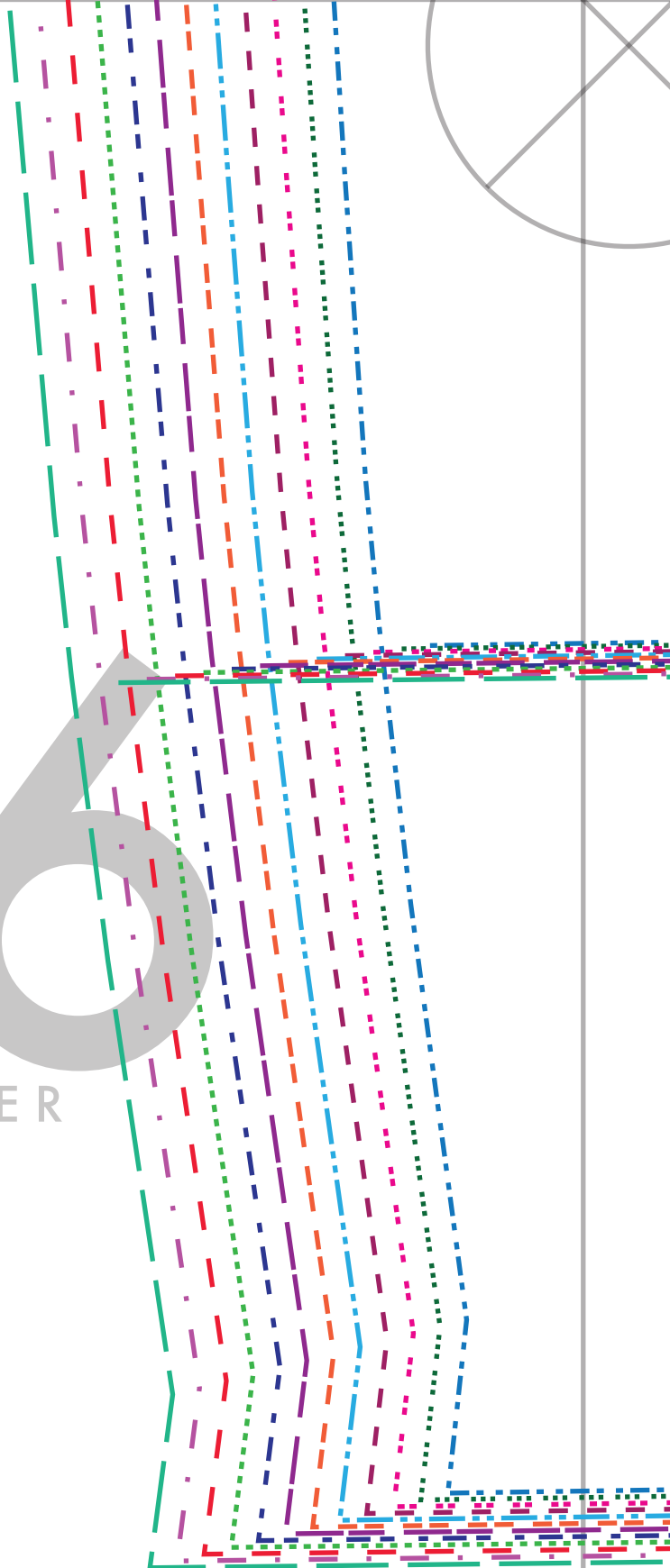


C5

U S L E T T E R

C6

US LETTER

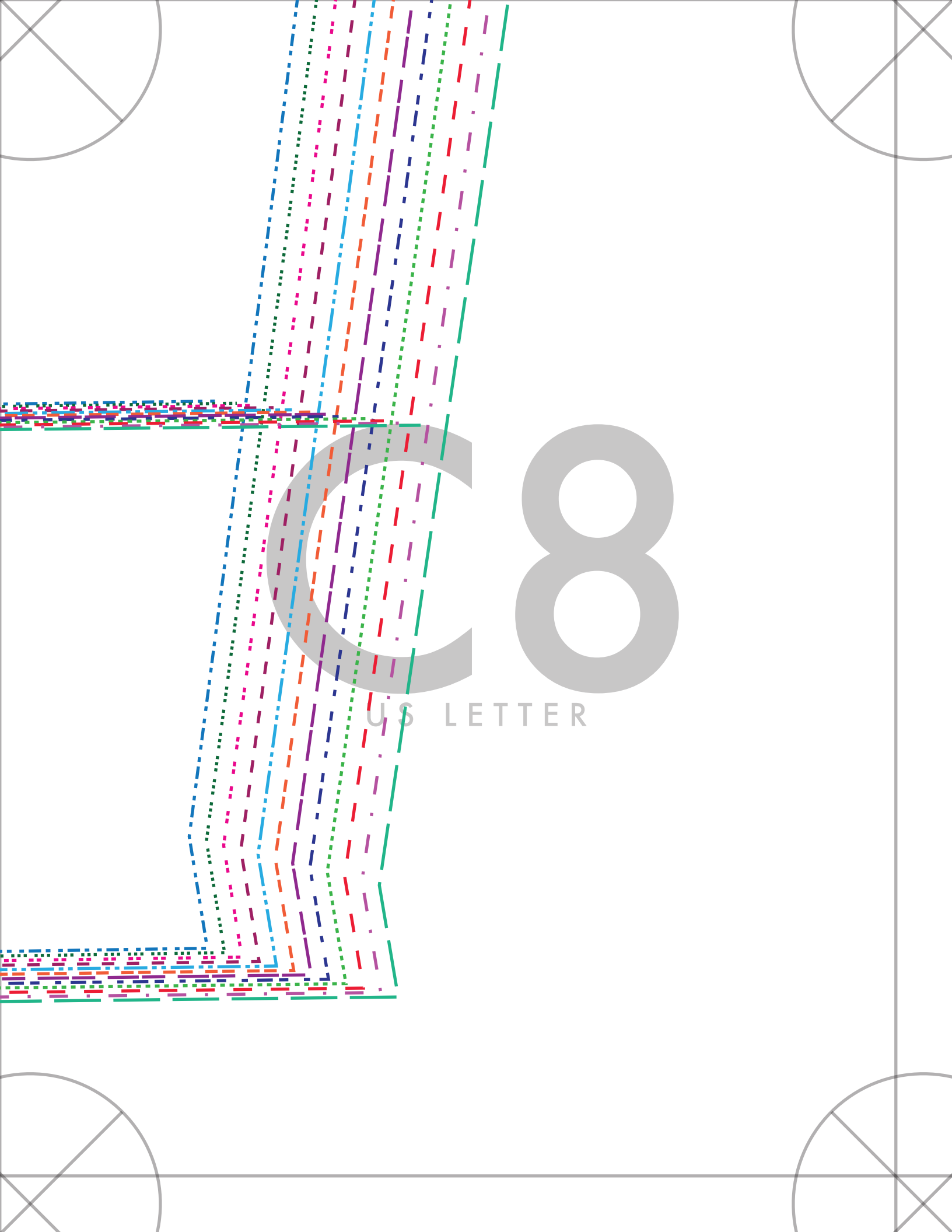


3/4 SLEEVE - 1" HEM

C7

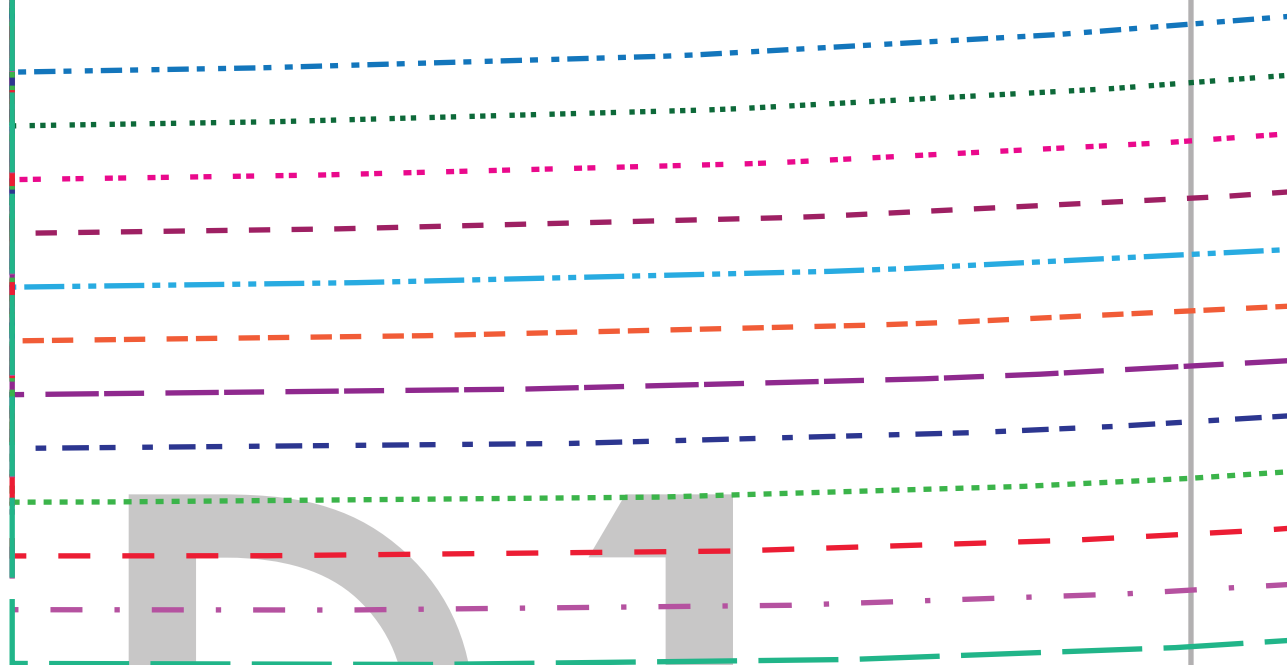
US LETTER

LONG SLEEVE - 1" HEM



C8

US LETTER



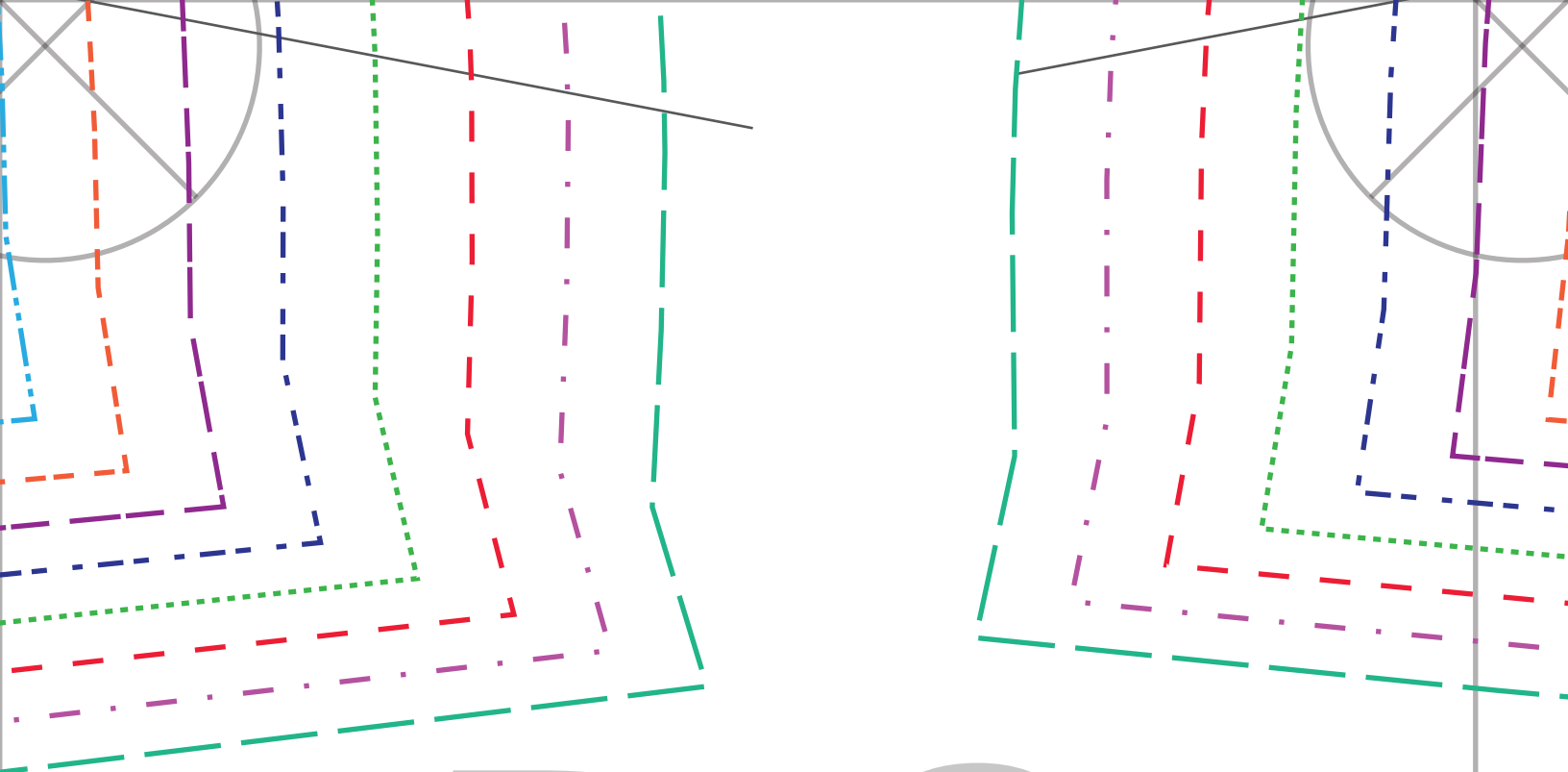
D1

U S L E T T E R

The background features a light gray grid with four circles at the corners, each divided into four quadrants by diagonal lines. Overlaid on this are numerous dashed lines in various colors (blue, green, pink, purple, orange, red, teal) that generally trend from the top-left towards the bottom-right. The text 'D2' is centered in a large, bold, gray sans-serif font.

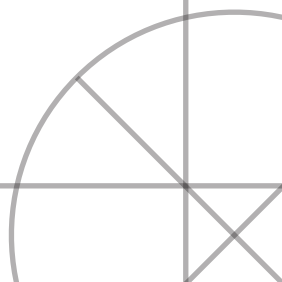
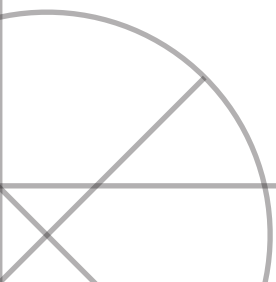
D2

U S L E T T E R



D3

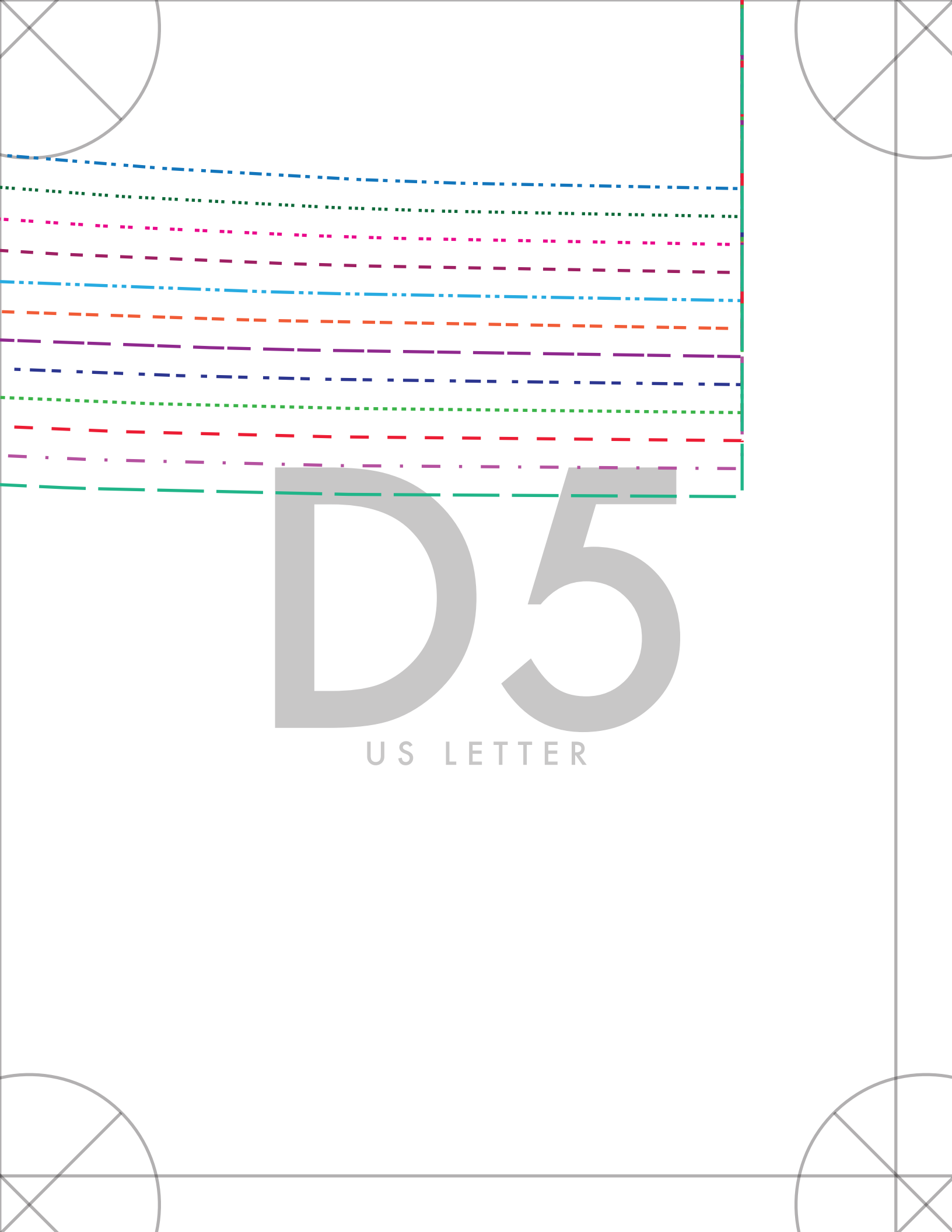
U S LETTER



The background of the page is decorated with a series of parallel, slightly slanted dashed lines in various colors including blue, green, orange, purple, red, and teal. In the four corners, there are faint, light gray circular motifs, each containing a crosshair design.

D4

US LETTER



D5

US LETTER